

NOTES:

Call location for hours and directions

Locations:

Complete Diagnostic Imaging Services

Saint Anne’s Hospital

Ground Floor, 795 Middle Street, Fall River

508-674-5600 ext. 2300 • Fax 508-235-5636

Free valet parking

Diagnostic Imaging Services
at Saint Anne’s Hospital

For our patients and their physicians, Saint Anne’s Diagnostic Imaging Services combines the expertise of board-certified radiologists with the area’s most comprehensive range of advanced imaging technology. Our fully digitized network of imaging technology assures the highest imaging quality with less time and inconvenience for patients, as well as rapid access to the results for physicians. Images can be viewed and sent via computer to multiple specialists within the hospital, across town to a physician’s office or to other hospitals and specialists.

Our dedicated team of physicians and technologists is focused on providing the highest quality imaging and patient comfort. This extends to working with our youngest patients as well as others who require special considerations and appointment scheduling for imaging.

We offer a spectrum of services, including:

- Computerized Tomography (CT) scanning
- Digital X-ray
- Digital Mammography provided in our dedicated Robert F. Stoico/FIRSTFED Center for Breast Care
- Magnetic Resonance Imaging (MRI)
- Nuclear Medicine with CT capability
- PET/CT imaging
- Ultrasound

INTERPRETER SERVICES AVAILABLE

Portuguese - Português

Fala Português? Vamos oferecer-lhe um intérprete gratuito.

Spanish - Español

¿Habla español? Le proporcionaremos un intérprete sin costo alguno para usted.

Digital Imaging:
A High-Tech Change for Better Care

Digital imaging creates a “filmless” environment that permits rapid viewing of pictures and secure transmission to physicians whether they are in the hospital, their nearby practice or a specialist located miles away. Digital images are high quality, environmentally friendly and easier to access via PACS (Picture Archiving Communication System).

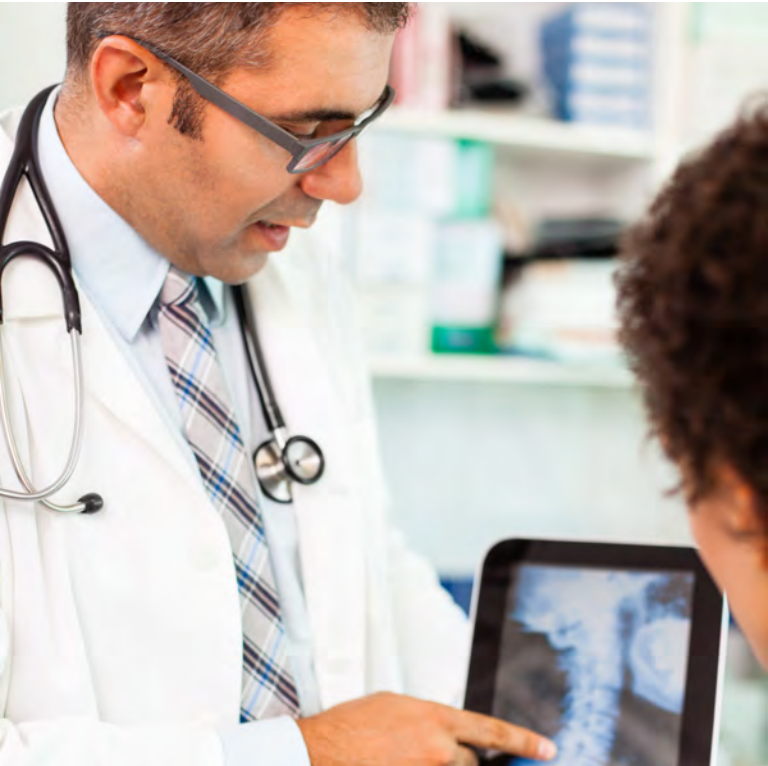
The PACS system is part of a patient’s secure and confidential electronic medical record, which provides for improved care through integration of various tests and reports all in one easily-retrievable location.

Care Agreement:

You have the right to help plan your care. To help with this plan, you must learn about your health condition and how it may be treated. You can then discuss treatment options with your caregivers. Work with them to decide what care may be used to treat you. You always have the right to refuse treatment.

Saint Anne’s Hospital

DIAGNOSTIC IMAGING SERVICES



Myelogram
PATIENT INFORMATION

Accredited by the American College of Radiology

SaintAnnesHospital.org

Understanding Your Exam

What is an Myelogram?

- A myelogram (mi-uh-lo-gram) is an X-ray examination of your spine where contrast is injected around your spinal cord, also called myelography (mi-uh-lah-gruh-fee).
- Your spine contains vertebrae (ver-tuh-bray), the spinal cord, and spinal fluid. Vertebrae are bones stacked on one another stretching from your neck to your tailbone. There is a disc (cushion) between each vertebrae. The spinal canal runs down through the center of these vertebrae. The spinal cord is inside the spinal canal. Nerves go from the brain through the spinal cord to the rest of the body. Cerebrospinal fluid (CSF) bathes, cushions, and protects the brain and spinal cord.

Why do I need a Myelogram?

You may need a myelogram to check for one or more of the following problems.

- Ruptured (burst) disc.
- A tumor (lump or bump) in the area of the spine.
- Blockage of CSF flow.

What You Should Know

Care:

- A needle is put between two vertebra in your back. A liquid contrast solution is put through the needle and into the spinal column. Tell your caregiver right away if you are allergic to shellfish or iodine because you may also be allergic to the contrast. It helps areas of the spine show up better in

the pictures. You may feel a heaviness or pressure when the contrast is injected. You may feel dizzy or nauseated (upset stomach), but this is rare.

- You will be asked to move into many different positions while X-ray pictures are taken. A CT scan may also be done. The lumbar puncture, myelogram, and CT scan take about 1 to 2 hours. You may be asked to lie flat for a few hours after the myelogram. This helps lessen the chance of having a “spinal headache.”

Appointment Scheduling

508-235-5339

Monday-Friday 8 am - 6 pm

Your physician's office will schedule your MRI. Our Scheduling staff are able to assist with all scheduling needs, as well as provide patients and physician practices exam preparation instructions when applicable.

If you are unable to keep your appointment and need to reschedule or if you wish to cancel your appointment, please contact us as soon as possible. A 24 hour notice would be greatly appreciated.

Pre-Registration By Phone: 508-235-5674

To expedite your visit, please contact our Patient Assistance Center to pre-register for your exam. If we do not hear from you, a member of our staff will attempt to reach you. Please ensure your physician has your most up to date contact information. During the registration process we can assist you with your co-pay, coinsurance, and deductible.

Once you have pre-registered, you can arrive on the scheduled day and time and go directly to the Diagnostic Imaging Services location.

The Day Of Your Exam

- Use the Valet Parking services where available, Monday through Friday, and reduce the amount of time you spend looking for parking. It's free, and you can pick up your car at the entrance when you are finished with your appointment. No long walks! Hours vary by location.
- For exams scheduled at the hospital: If you have not pre-registered, please go to Patient Registration, located near the main entrance to the hospital, 30 minutes prior to your scheduled exam appointment to be registered for your exam.
- If you are diabetic, inform staff and take your medications as you would normally.
- We want our patients to be as comfortable as possible while having tests performed. However, we ask that you not bring children with you unless you have an adult to watch and care for them while you are having your procedure.
- Pediatric patients must be accompanied by either a parent or legal guardian in order to receive care.

