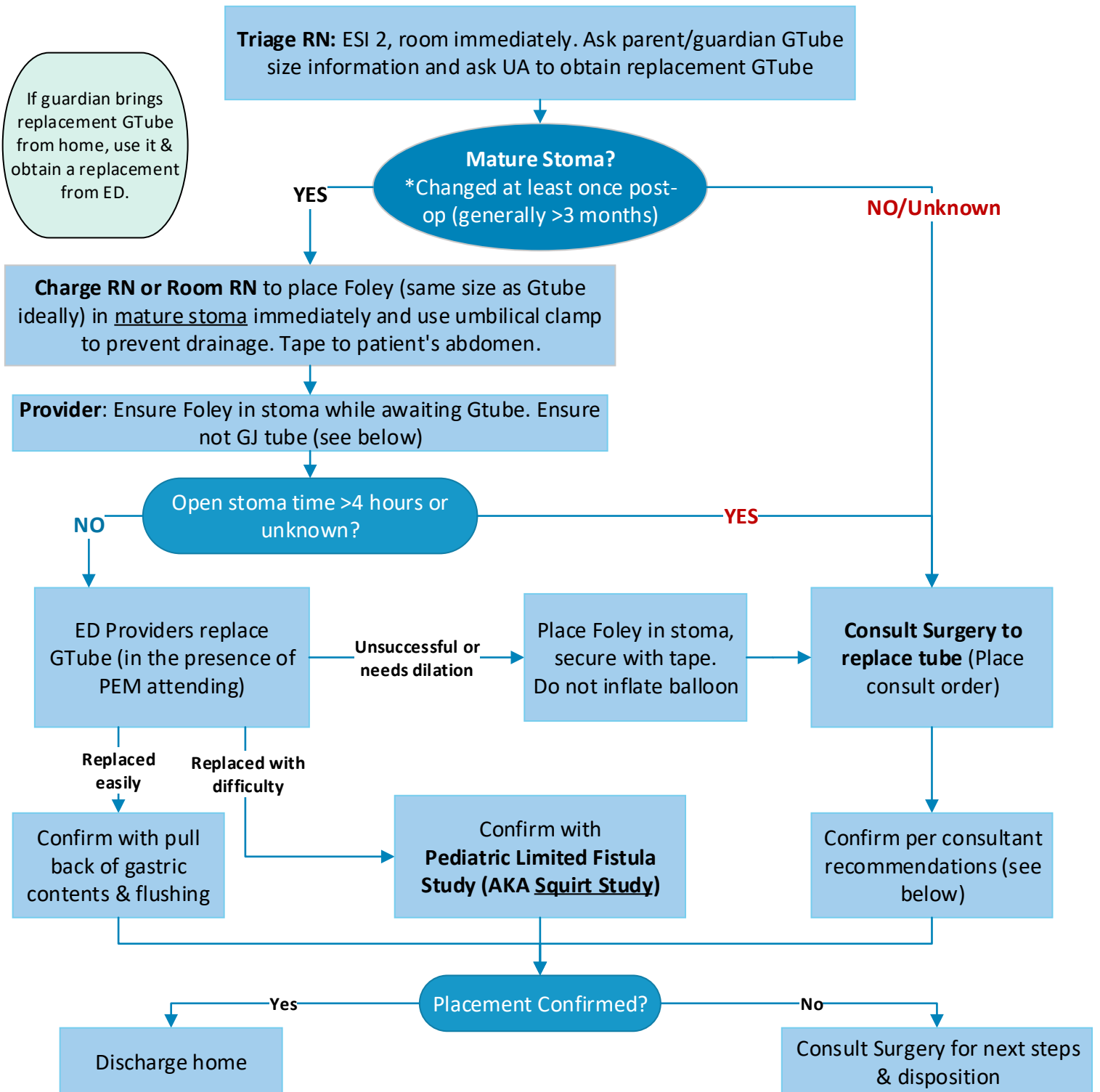




Gastrostomy Tube Dislodgement

Authors: Sara Holmstrom, Frank Overly, Francois Luks, Carl-Christian Jackson, Carolina Cerezo



- **Squirt Study:** ED provider instills contrast (30-60mL) for quick check, Contrast = Omnipaque 240, do NOT use Gastrografin

- **Fluoroscopy study (Fistulogram):** increases sensitivity for leakage - performed by Radiologist, order per consultant request

- Gastrostomy-jejunostomy (GJ) tubes require Interventional Radiology (IR) replacement. If same-day replacement unavailable, replace Gtube per above to keep stoma open & use for meds if needed. Arrange for IR replacement.

- MIC-key button and MiniONE buttons are interchangeable.

- If GI placed the Gtube, can send staff message to inserting provider as FYI. If replacement unsuccessful and patient will be admitted, can discuss with GI on call regarding admission vs admitting to surgery

- If Gtube placed at outside facility and Gtube type not available, contact providers and discuss optimal management plan